

## \$749,998 - 210 Sedum Way, Sherwood Park

MLS® #E4415034

**\$749,998**

3 Bedroom, 2.50 Bathroom, 2,038 sqft

Single Family on 0.00 Acres

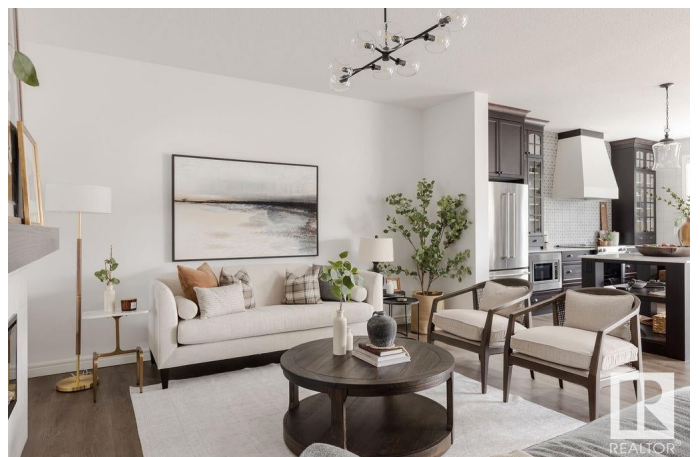
Summerwood, Sherwood Park, AB

SHOW HOME FOR SALE!!!! Welcome to the "Louise" built by the award-winning builder Pacesetter homes and is located in the heart of Summerwood and just steps to the neighborhood park and walking trails. As you enter the home you are greeted by luxury vinyl plank flooring throughout the great room, kitchen, and the breakfast nook. Your large kitchen features tile back splash, an island a flush eating bar, quartz counter tops and an undermount sink. Just off of the kitchen and tucked away by the front entry is a 2 piece powder room. Upstairs is the master's retreat with a large walk in closet and a 4-piece en-suite. The second level also include 2 additional bedrooms with a conveniently placed main 4-piece bathroom and a good sized bonus room. Close to all amenities and easy access to Yellowhead Trail. This Show home has tons of upgrades and also includes all the furniture, AC , window coverings and so much more!

Built in 2023

### Essential Information

|           |           |
|-----------|-----------|
| MLS® #    | E4415034  |
| Price     | \$749,998 |
| Bedrooms  | 3         |
| Bathrooms | 2.50      |



|                |                        |
|----------------|------------------------|
| Full Baths     | 2                      |
| Half Baths     | 1                      |
| Square Footage | 2,038                  |
| Acres          | 0.00                   |
| Year Built     | 2023                   |
| Type           | Single Family          |
| Sub-Type       | Detached Single Family |
| Style          | 2 Storey               |
| Status         | Active                 |

### Community Information

|             |               |
|-------------|---------------|
| Address     | 210 Sedum Way |
| Area        | Sherwood Park |
| Subdivision | Summerwood    |
| City        | Sherwood Park |
| County      | ALBERTA       |
| Province    | AB            |
| Postal Code | T8H 2X8       |

### Amenities

|                |                        |
|----------------|------------------------|
| Amenities      | Air Conditioner        |
| Parking Spaces | 4                      |
| Parking        | Double Garage Attached |

### Interior

|                   |   |
|-------------------|---|
| Interior Features | ensuite bathroom  |
| Appliances        | Air Conditioning-Central, Dishwasher-Built-In, Furniture Included, Garage Control, Garage Opener, Refrigerator, Stove-Electric, Window Coverings, See Remarks |
| Heating           | Forced Air-1, Natural Gas   |
| Stories           | 2   |
| Has Basement      | Yes   |
| Basement          | Full, Unfinished  |

### Exterior

|                   |  |
|-------------------|--|
| Exterior          | Wood, Vinyl  |
| Exterior Features | Airport Nearby, Golf Nearby, Landscaped, Park/Reserve, Playground Nearby, Public Transportation, Schools, Shopping Nearby, See Remarks |
| Roof              | Asphalt Shingles   |

|              |                    |
|--------------|--------------------|
| Construction | Wood, Vinyl        |
| Foundation   | Concrete Perimeter |

**Additional Information**

|                |                    |
|----------------|--------------------|
| Date Listed    | December 1st, 2024 |
| Days on Market | 139                |
| Zoning         | Zone 25            |

DATA IS DEEMED RELIABLE BUT IS NOT GUARANTEED ACCURATE BY THE REALTORS® ASSOCIATION OF EDMONTON. COPYRIGHT 2025 BY THE REALTORS® ASSOCIATION OF EDMONTON. ALL RIGHTS RESERVED.Trademarks are owned or controlled by the Canadian Real Estate Association (CREA) and identify real estate professionals who are members of CREA (REALTOR®, REALTORS®) and/or the quality of services they provide (MLS®, Multiple Listing Service®)

Listing information last updated on April 19th, 2025 at 6:02pm MDT