

Courtesy Of Chris Broadhurst Of RE/MAX River City

\$185,950 - 101 10520 80 Avenue, Edmonton

MLS® #E4418454

\$185,950

2 Bedroom, 2.00 Bathroom, 944 sqft

Condo / Townhouse on 0.00 Acres

Queen Alexandra, Edmonton, AB

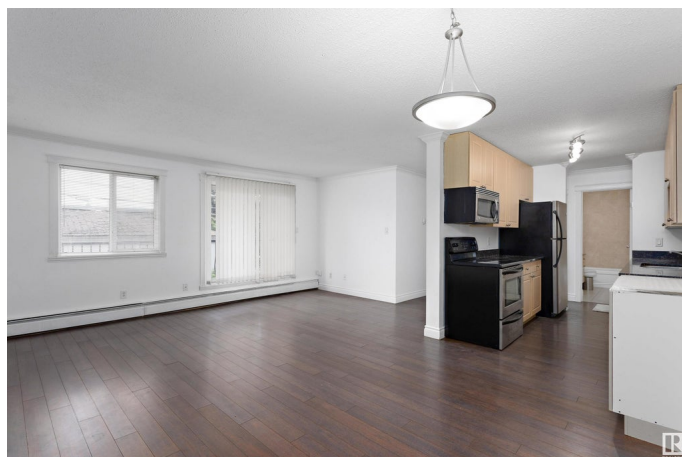
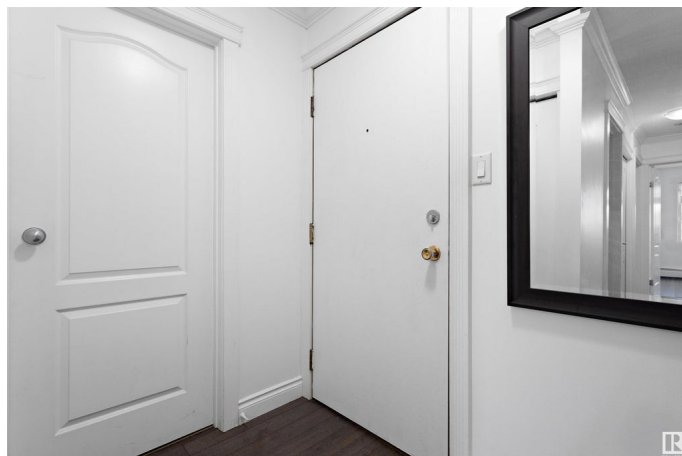
Amazing opportunity for ownership or investment. A can't beat location just off Whyte Ave and all that offers, this spacious 2 bedroom, 2 bathroom unit has it all in a nice open concept and affordable package. Unit also offers in-suite laundry and storage which offers a level of convenience not many similar units do. Transit, shops, entertainment, parks, the U of A and our world renowned river valley are steps away and everything that makes this a must to consider.

Built in 1981

Essential Information

| | |
|----------------|------------------------|
| MLS® # | E4418454 |
| Price | \$185,950 |
| Bedrooms | 2 |
| Bathrooms | 2.00 |
| Full Baths | 2 |
| Square Footage | 944 |
| Acres | 0.00 |
| Year Built | 1981 |
| Type | Condo / Townhouse |
| Sub-Type | Lowrise Apartment |
| Style | Single Level Apartment |
| Status | Active |

Community Information



| | |
|-------------|---------------------|
| Address | 101 10520 80 Avenue |
| Area | Edmonton |
| Subdivision | Queen Alexandra |
| City | Edmonton |
| County | ALBERTA |
| Province | AB |
| Postal Code | T6E 1V3 |

Amenities

| | |
|-----------|---------------------------------|
| Amenities | Security Door, Storage-In-Suite |
| Parking | Stall |

Interior

| | |
|--------------|--------------------------------------------------------------------------------------------------------|
| Appliances | Dishwasher-Built-In, Dryer, Microwave Hood Fan, Refrigerator, Stove-Electric, Washer, Window Coverings |
| Heating | Baseboard, Water |
| # of Stories | 4 |
| Stories | 1 |
| Has Basement | Yes |
| Basement | None, No Basement |

Exterior

| | |
|-------------------|-------------------------------------------------------------------------------------------|
| Exterior | Wood, Brick, Stucco |
| Exterior Features | Back Lane, Landscaped, Playground Nearby, Public Transportation, Schools, Shopping Nearby |
| Roof | Tar & Gravel |
| Construction | Wood, Brick, Stucco |
| Foundation | Concrete Perimeter |

Additional Information

| | |
|----------------|--------------------|
| Date Listed | January 17th, 2025 |
| Days on Market | 94 |
| Zoning | Zone 15 |
| Condo Fee | \$467 |

DATA IS DEEMED RELIABLE BUT IS NOT GUARANTEED ACCURATE BY THE REALTORS® ASSOCIATION OF EDMONTON. COPYRIGHT 2025 BY THE REALTORS® ASSOCIATION OF EDMONTON. ALL RIGHTS RESERVED. Trademarks are owned or controlled by the Canadian Real Estate Association (CREA) and identify real estate professionals who are members of CREA (REALTOR®, REALTORS®) and/or the quality of services they provide (MLS®, Multiple Listing Service®)

Listing information last updated on April 21st, 2025 at 2:32am MDT