

\$219,900 - 318 1506 Tamarack Boulevard, Edmonton

MLS® #E4426197

\$219,900

1 Bedroom, 1.00 Bathroom, 591 sqft
Condo / Townhouse on 0.00 Acres

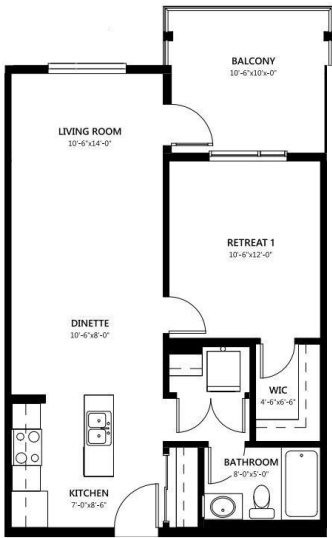
Tamarack, Edmonton, AB

Welcome to this brand-new, never-lived-in 1-bedroom, 1-bathroom condo in the sought-after Tamarack Community. The ODIN floor plan offers 648 sq. ft. of bright, open-concept living with quartz countertops, stainless steel appliances, full-height tile backsplashes, and 7â€• vinyl plank flooring. Enjoy the convenience of in-suite laundry, smart outlets, and a spacious private patio. The building features a heated underground parking stall, secure fob access, intercom system, LED-lit common areas, and a ROOFTOP PATIO with stunning views. Designed for comfort and efficiency, it boasts R20 walls, R40 roof insulation, soundproofing, Low-E windows, and individually metered power. Some images are virtually staged. Located within walking distance to shops, restaurants, a recreation center, and schools, with easy access to transit and major roadways, this home offers modern living with convenience. Backed by the Alberta New Home Warranty, this stylish, low-maintenance condo is a fantastic opportunityâ€”donâ€™t miss out!



Odin

648 sq. ft.
1 bedroom + 1 bathroom



Built in 2024

Essential Information

MLS® #	E4426197
Price	\$219,900

Bedrooms	1
Bathrooms	1.00
Full Baths	1
Square Footage	591
Acres	0.00
Year Built	2024
Type	Condo / Townhouse
Sub-Type	Lowrise Apartment
Style	Multi Level Apartment
Status	Active

Community Information

Address	318 1506 Tamarack Boulevard
Area	Edmonton
Subdivision	Tamarack
City	Edmonton
County	ALBERTA
Province	AB
Postal Code	T6T 2J5

Amenities

Amenities	Rooftop Deck/Patio
Parking	Stall

Interior

Appliances	Dishwasher-Built-In, Dryer, Microwave Hood Fan, Refrigerator, Stove-Electric, Washer
Heating	Hot Water, Natural Gas
# of Stories	4
Stories	1
Has Basement	Yes
Basement	None, No Basement

Exterior

Exterior	Wood, Stone, Vinyl, Hardie Board Siding
Exterior Features	Airport Nearby, Playground Nearby, Public Transportation, Recreation Use, Schools, Shopping Nearby
Roof	EPDM Membrane
Construction	Wood, Stone, Vinyl, Hardie Board Siding

Foundation Concrete Perimeter

Additional Information

Date Listed March 17th, 2025
Days on Market 32
Zoning Zone 30
Condo Fee \$383



DATA IS DEEMED RELIABLE BUT IS NOT GUARANTEED ACCURATE BY THE REALTORS® ASSOCIATION OF EDMONTON. COPYRIGHT 2025 BY THE REALTORS® ASSOCIATION OF EDMONTON. ALL RIGHTS RESERVED.Trademarks are owned or controlled by the Canadian Real Estate Association (CREA) and identify real estate professionals who are members of CREA (REALTOR®, REALTORS®) and/or the quality of services they provide (MLS®, Multiple Listing Service®)
Listing information last updated on April 18th, 2025 at 6:47pm MDT