

Courtesy Of Victor Dai Of Sweetly

# \$565,000 - 1226 Westerra Crescent, Stony Plain

MLS® #E4429852

**\$565,000**

5 Bedroom, 3.50 Bathroom, 2,234 sqft  
Single Family on 0.00 Acres

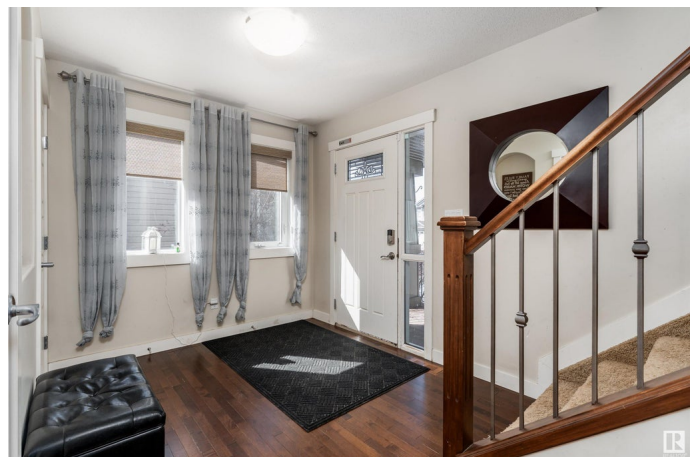
Westerra, Stony Plain, AB

Spacious 5-bedroom, 3.5-bathroom, 2-storey home in the desirable Westerra neighborhood of Stony Plain. With 2,234 sq. ft. of living space, this home features a cozy living room with a gas fireplace, a kitchen with stainless steel appliances, ample storage and a corner pantry. The main floor also includes a laundry room and a 2-pc bathroom. Upstairs, enjoy a bonus room, 3 bedrooms, and a 4-pc bathroom. The primary bedroom is a retreat with a walk-in closet and a 4-pc ensuite with a corner soaker tub. The fully finished basement offers a recreation room, 2 additional bedrooms and a 4-pc bathroom. The fenced yard backs onto trees and has a deck for relaxation. Double attached garage. Ideally located near parks, playgrounds, schools, and amenities. This home offers the perfect blend of comfort and convenience!

Built in 2010

## Essential Information

MLS® #	E4429852
Price	\$565,000
Bedrooms	5
Bathrooms	3.50
Full Baths	3
Half Baths	1
Square Footage	2,234



Acres	0.00
Year Built	2010
Type	Single Family
Sub-Type	Detached Single Family
Style	2 Storey
Status	Active

### **Community Information**

Address	1226 Westerra Crescent
Area	Stony Plain
Subdivision	Westerra
City	Stony Plain
County	ALBERTA
Province	AB
Postal Code	T7Z 0B2

### **Amenities**

Amenities	Deck, Detectors Smoke, Hot Water Tankless, No Smoking Home
Parking Spaces	4
Parking	Double Garage Attached

### **Interior**

Interior Features	ensuite bathroom
Appliances	Dishwasher-Built-In, Dryer, Hood Fan, Oven-Microwave, Washer, Curtains and Blinds
Heating	Forced Air-1, Natural Gas
Fireplace	Yes
Fireplaces	Tile Surround
Stories	3
Has Basement	Yes
Basement	Full, Finished

### **Exterior**

Exterior	Wood, Vinyl
Exterior Features	Backs Onto Park/Trees, Fenced, Landscaped, Schools, Shopping Nearby
Roof	Asphalt Shingles
Construction	Wood, Vinyl
Foundation	Concrete Perimeter

## Additional Information

Date Listed April 9th, 2025

Days on Market 11

Zoning Zone 91

DATA IS DEEMED RELIABLE BUT IS NOT GUARANTEED ACCURATE BY THE REALTORS® ASSOCIATION OF EDMONTON. COPYRIGHT 2025 BY THE REALTORS® ASSOCIATION OF EDMONTON. ALL RIGHTS RESERVED. Trademarks are owned or controlled by the Canadian Real Estate Association (CREA) and identify real estate professionals who are members of CREA (REALTOR®, REALTORS®) and/or the quality of services they provide (MLS®, Multiple Listing Service®)

Listing information last updated on April 20th, 2025 at 12:47am MDT