

Courtesy Of Raelee Stagliano Of RE/MAX River City

## \$145,000 - 8918c 144 Avenue, Edmonton

MLS® #E4429981

**\$145,000**

2 Bedroom, 1.00 Bathroom, 500 sqft  
Condo / Townhouse on 0.00 Acres

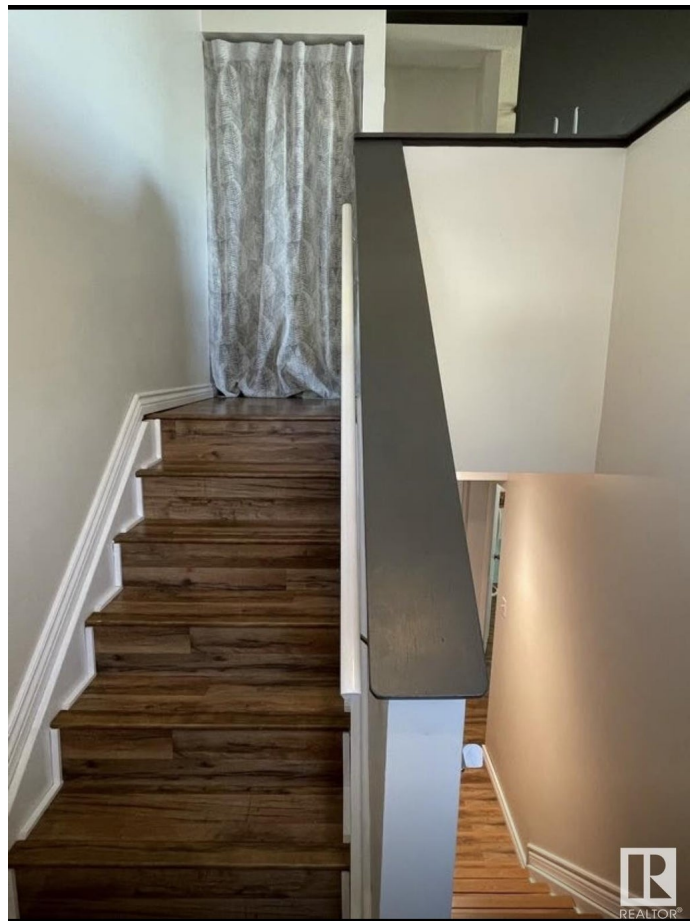
Evansdale, Edmonton, AB

Welcome to this beautifully updated townhouse, ideally located in a family-friendly community. This south-facing home offers an abundance of natural light and park views from your very own patio. Inside, you'll find a thoughtfully renovated interior, featuring gorgeous stone countertops and stainless steel appliances in the kitchen. The home also boasts a spacious laundry room with storage and newer washer and dryer. With two spacious bedrooms and a well-appointed bathroom, this townhouse offers both comfort and convenience. It's perfect for a small family or anyone looking for a peaceful retreat in a prime location. Situated just minutes from excellent schools, parks, and local amenities, this home combines style, functionality, and an unbeatable location.

Built in 1974

### Essential Information

MLS® #	E4429981
Price	\$145,000
Bedrooms	2
Bathrooms	1.00
Full Baths	1
Square Footage	500
Acres	0.00
Year Built	1974



Type	Condo / Townhouse
Sub-Type	Townhouse
Style	Bi-Level
Status	Active

### **Community Information**

Address	8918c 144 Avenue
Area	Edmonton
Subdivision	Evansdale
City	Edmonton
County	ALBERTA
Province	AB
Postal Code	T5E 5V4

### **Amenities**

Amenities	Off Street Parking, On Street Parking, No Animal Home, No Smoking Home, Parking-Plug-Ins, Patio, Security Window Bars, Storage-In-Suite, Vinyl Windows
Parking	Stall

### **Interior**

Appliances	Dryer, Refrigerator, Stove-Electric, Washer
Heating	Forced Air-1, Natural Gas
Stories	2
Has Basement	Yes
Basement	Full, Finished

### **Exterior**

Exterior	Wood
Exterior Features	Playground Nearby, Public Transportation, Schools, Shopping Nearby
Roof	Asphalt Shingles
Construction	Wood
Foundation	Concrete Perimeter

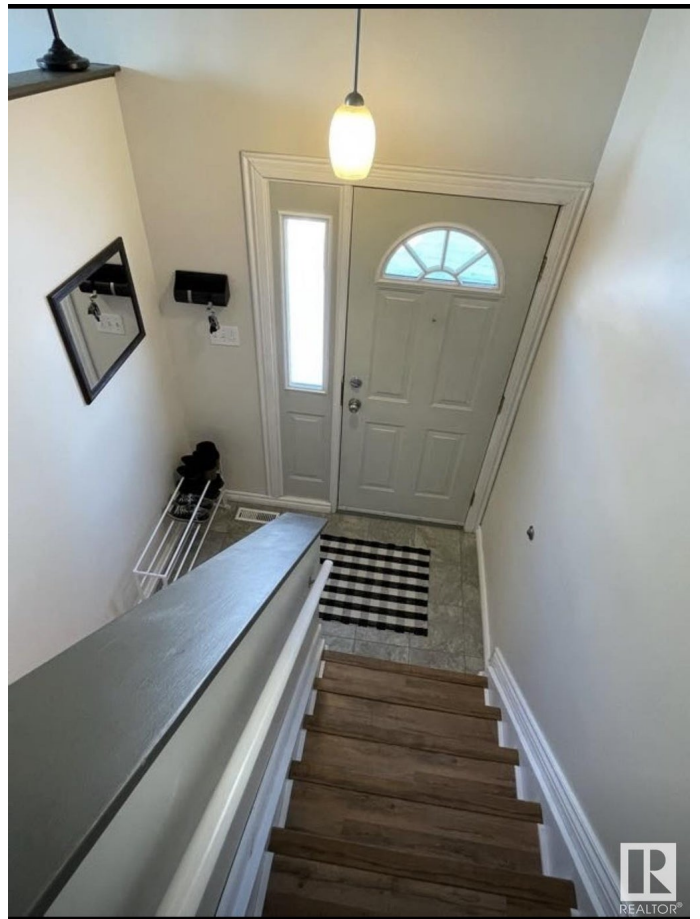
### **School Information**

Elementary	St.Anne, Dickensfield
Middle	Cardinal Leger

### **Additional Information**

Date Listed	April 10th, 2025
-------------	------------------

Days on Market 9  
Zoning Zone 02  
Condo Fee \$365



DATA IS DEEMED RELIABLE BUT IS NOT GUARANTEED ACCURATE BY THE REALTORS® ASSOCIATION OF EDMONTON. COPYRIGHT 2025 BY THE REALTORS® ASSOCIATION OF EDMONTON. ALL RIGHTS RESERVED. Trademarks are owned or controlled by the Canadian Real Estate Association (CREA) and identify real estate professionals who are members of CREA (REALTOR®, REALTORS®) and/or the quality of services they provide (MLS®, Multiple Listing Service®)

Listing information last updated on April 19th, 2025 at 6:02pm MDT