

## \$675,000 - 9543 146 Street, Edmonton

MLS® #E4430283

**\$675,000**

4 Bedroom, 2.00 Bathroom, 1,367 sqft  
Single Family on 0.00 Acres

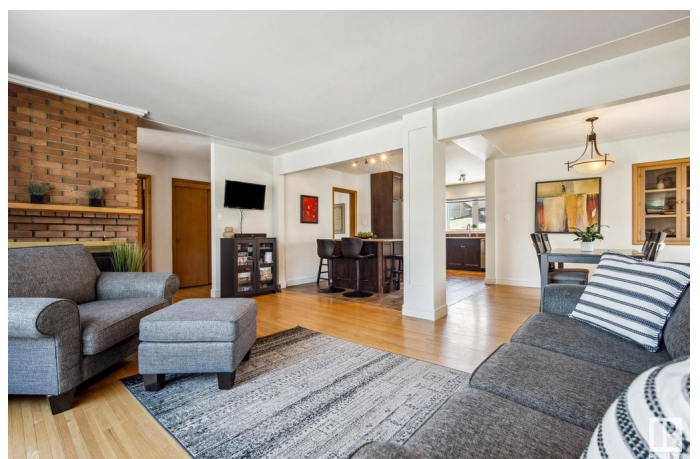
Crestwood, Edmonton, AB

As you step inside this home, you'll be greeted by an open floor plan that seamlessly connects the living area to the dining room and kitchen. The kitchen has been meticulously renovated boasting modern appliances and finishes that will inspire culinary creativity. Adjacent to the kitchen, the dining and living areas offer ample space for both relaxation and entertaining. The house features three spacious bedrooms and a beautifully renovated bathrooms on the main floor that exude comfort and style. Downstairs, discover a finished basement - an ideal space for a variety of uses such as a recreation room, another bedroom a 3 piece bathroom & additional storage. Outside, enjoy the benefits of living on a large lot located on a quiet street. The generous outdoor space offers endless possibilities for landscaping and outdoor activities. Situated within walking distance to Crestwood School K-9, this location offers convenient access to quality education. This property is more than just a house; it's a lifestyle

Built in 1956

### Essential Information

MLS® #	E4430283
Price	\$675,000



Bedrooms	4
Bathrooms	2.00
Full Baths	2
Square Footage	1,367
Acres	0.00
Year Built	1956
Type	Single Family
Sub-Type	Detached Single Family
Style	Bungalow
Status	Active

### Community Information

Address	9543 146 Street
Area	Edmonton
Subdivision	Crestwood
City	Edmonton
County	ALBERTA
Province	AB
Postal Code	T5N 2Z2

### Amenities

Amenities	No Smoking Home, Vinyl Windows
Parking	Double Garage Detached

### Interior

Appliances	Dishwasher-Built-In, Dryer, Microwave Hood Fan, Refrigerator, Stove-Gas, Washer
Heating	Forced Air-1, Natural Gas
Stories	2
Has Basement	Yes
Basement	Full, Finished

### Exterior

Exterior	Wood, Stucco
Exterior Features	Back Lane, Fenced, Flat Site, Fruit Trees/Shrubs, Landscaped, Paved Lane, Playground Nearby, Public Transportation, Schools, Shopping Nearby
Roof	Asphalt Shingles
Construction	Wood, Stucco

Foundation                Concrete Perimeter

**School Information**

Elementary                Crestwood Elementary  
Middle                      Crestwood Elementary  
High                         Ross Sheppard School

**Additional Information**

Date Listed                April 11th, 2025  
Days on Market        5  
Zoning                      Zone 10

DATA IS DEEMED RELIABLE BUT IS NOT GUARANTEED ACCURATE BY THE REALTORS® ASSOCIATION OF EDMONTON. COPYRIGHT 2025 BY THE REALTORS® ASSOCIATION OF EDMONTON. ALL RIGHTS RESERVED.Trademarks are owned or controlled by the Canadian Real Estate Association (CREA) and identify real estate professionals who are members of CREA (REALTOR®, REALTORS®) and/or the quality of services they provide (MLS®, Multiple Listing Service®)  
Listing information last updated on April 16th, 2025 at 5:32am MDT