

\$539,900 - 146 Greengrove Avenue, Sherwood Park

MLS® #E4431541

\$539,900

3 Bedroom, 2.50 Bathroom, 1,328 sqft
Single Family on 0.00 Acres

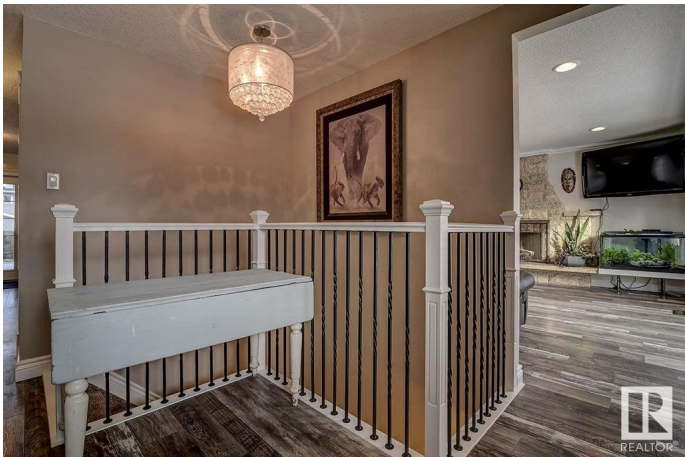
Glen Allan, Sherwood Park, AB

Beautifully renovated and fully finished 3+1-bedroom, 2.5-bath home on a tranquil street in Glen Allan! Steps from Glen Allan Elementary, and St. Nicholas Schools, this gem features an open-concept main floor with a spacious upgraded kitchen. Updates include New High Efficient Furnace (2025) shingles (2017), water tank (2018), flooring, windows, exterior stucco, soffits, fascia, driveway (2015), and bathrooms. Enjoy the oversized heated garage, private backyard, and charming gazebo. Perfect for familiesâ€™ pride of ownership shines throughout!

Built in 1972

Essential Information

MLS® #	E4431541
Price	\$539,900
Bedrooms	3
Bathrooms	2.50
Full Baths	2
Half Baths	1
Square Footage	1,328
Acres	0.00
Year Built	1972
Type	Single Family
Sub-Type	Detached Single Family
Style	Bungalow



Status Active

Community Information

Address 146 Greengrove Avenue
Area Sherwood Park
Subdivision Glen Allan
City Sherwood Park
County ALBERTA
Province AB
Postal Code T8A 3C7

Amenities

Amenities Deck, Gazebo, Vinyl Windows, Wet Bar
Parking Double Garage Detached

Interior

Interior Features ensuite bathroom
Appliances Alarm/Security System, Dishwasher-Built-In, Dryer, Garage Control, Garage Opener, Refrigerator, Stove-Countertop Electric, Washer, Window Coverings, Garage Heater
Heating Forced Air-1, Natural Gas
Fireplace Yes
Fireplaces Masonry
Stories 2
Has Basement Yes
Basement Full, Finished

Exterior

Exterior Wood, Stucco
Exterior Features Fenced, Flat Site, Playground Nearby, Schools, Shopping Nearby
Roof Asphalt Shingles
Construction Wood, Stucco
Foundation Concrete Perimeter

School Information

Elementary St Nicholas & Glen Allan

Additional Information

Date Listed April 17th, 2025
Days on Market 2

Zoning

Zone 25

DATA IS DEEMED RELIABLE BUT IS NOT GUARANTEED ACCURATE BY THE REALTORS® ASSOCIATION OF EDMONTON. COPYRIGHT 2025 BY THE REALTORS® ASSOCIATION OF EDMONTON. ALL RIGHTS RESERVED. Trademarks are owned or controlled by the Canadian Real Estate Association (CREA) and identify real estate professionals who are members of CREA (REALTOR®, REALTORS®) and/or the quality of services they provide (MLS®, Multiple Listing Service®)

Listing information last updated on April 19th, 2025 at 6:32pm MDT